

ABC INFINITE Series

Breaking New Limits With **25%+** Efficiency

High Power

+40W

more output in the same footprint



High Technology

ABC Grid-free front side
InvisiRibbon technology
ZeroGap cell layout

+4.8%

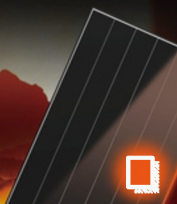
light-receiving area



Partial Shading Optimisation

+30%

more energy when shaded



Low Temperature Coefficient

+1.7%

more output at 80°C



Micro-crack Resistance

+20%

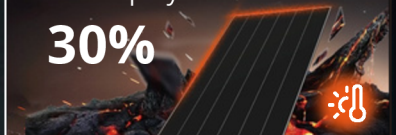
cell bending strength



High Temperature Restriction

Reduces heat build up by

30%



reddot winner 2023

Disclaimer: Comparison based on AIKO ABC 490W vs. typical TOPCon 450W module of same size. Results may vary by conditions.



Office: Level 12, 360 Elizabeth Street, Melbourne VIC 3000, Australia
Tel: (03) 5219 2402 | 1300 245 628
Email: aus.service@aikosolar.com
Website: www.aikosolar.com/au/

N-Type ABC INFINITE | Customer Value

Homeowner

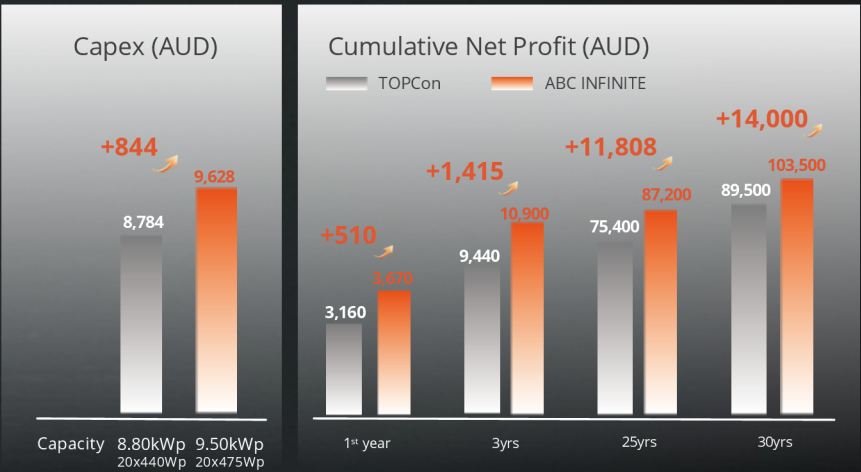
Installed Capacity **+8.0%**
System Payback Period **4.4 years**

Lifetime Power Generation **+15.8%**
Lifetime Energy Profit **+A\$14,000**



Average Annual Electricity Consumption
8,800 kWh

ABC INFINITE vs. TOPCon



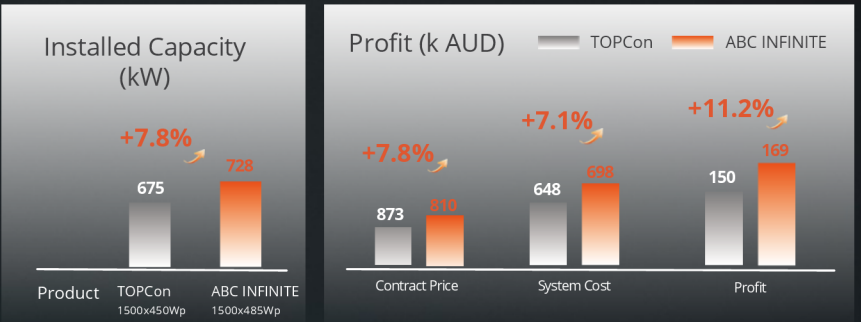
Remark:
Location: VIC, Australia; Family: 4 people (2 adults, 2 children); Net-metered Price: \$0.33/kWh
Roof type: Gable roof; Module Inclination: 25° North Direction; TOPCon 440W vs. ABC INFINITE 475W
Assumes inverter sized appropriately to absorb generation.

C&I EPC

Installed Capacity Increased by **+7.8%**

Profit Increased by **+11.2%**

ABC INFINITE vs. TOPCon

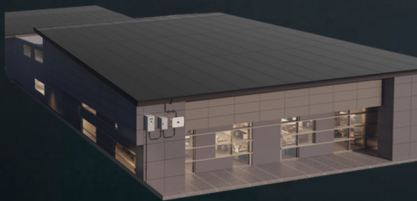


Remark:
Location: VIC, Australia; Roof area: 4000m2 C&I rooftop; EPC contract price: \$1.20/W
Module Size: 1762*1134mm; TOPCon 450W vs. ABC INFINITE 485W

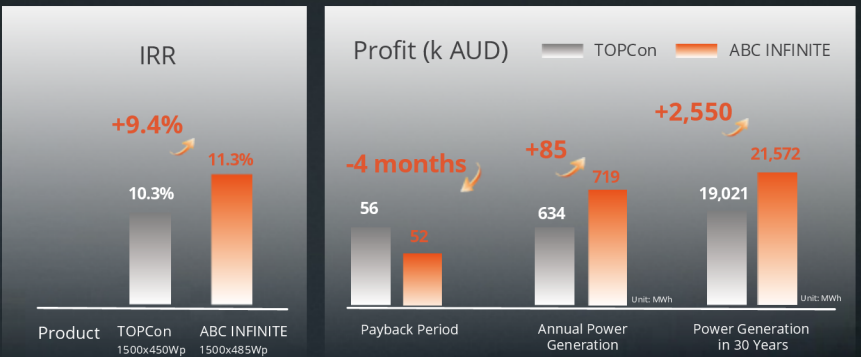
C&I Owner

IRR **+9.4%**
Payback Period **-4 months**

Annual Power Generation **+85 MWh**
Lifetime Power Generation **+2,550 MWh**



ABC INFINITE vs. TOPCon



Remark:
Location: VIC, Australia; Roof area: 4000m2 C&I rooftop; Comprehensive Electricity Price: \$0.192/kWh
Module Size: 1762*1134mm; TOPCon 450W vs. ABC INFINITE 485W