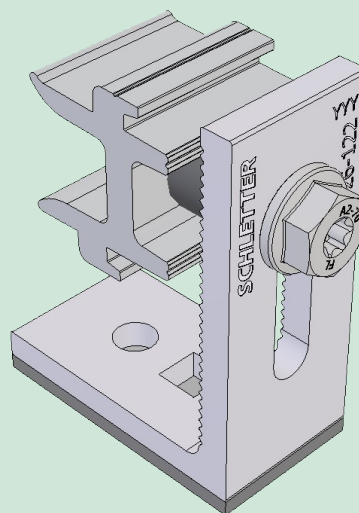


RAPID PRO L

PRODUCT SHEET

- + For trapezoidal, corrugated, and concrete roofs
- + Pre-assembled with multi-adapter that is usable for both ProLine and the Standard rails
- + Rail seat is height-adjustable



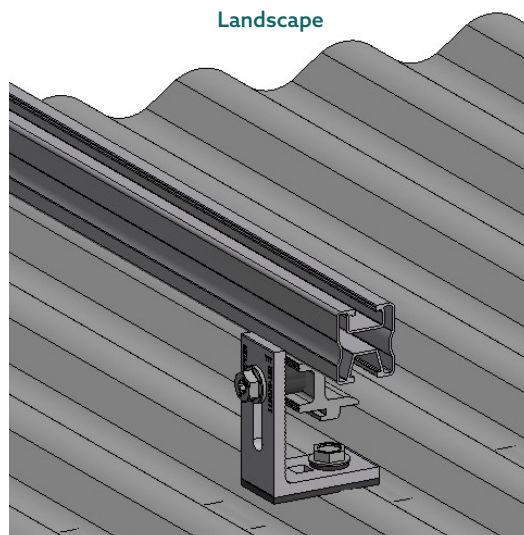
Optimal load distribution

With its optimised base length, the design of this special fastener minimises the forces on the roof sheet. This allows a good load introduction into the substructure.

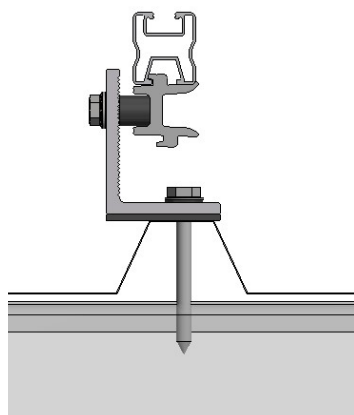
Minimising the installation effort

The module beams are height adjustable on the fastener which allows for varying panel clearance to the roofing sheet based on application. The UV-resistant EPDM rubber underlay guarantees absolute water tightness. These installation practice-oriented features reduce the installation costs enormously.

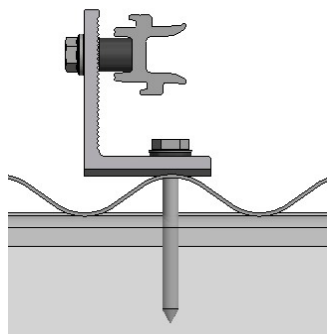
Landscape



Possible dimensions

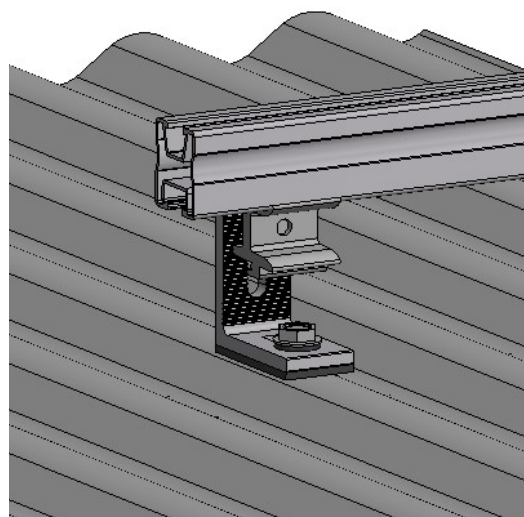


Fixing through
trapezoidal roof
sheet on purlin



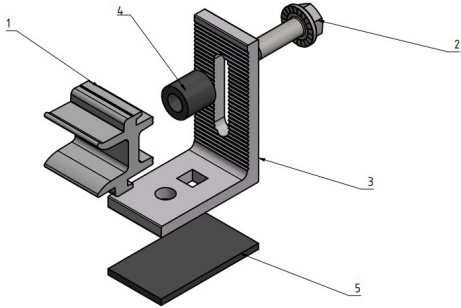
Fixing through
corrugated roof
sheet on purlin

Portrait



TECHNICAL DETAILS

Scope of application	Non-concealed roofs with trapezoidal and corrugated profiles fixing into timber or metal substructure.
Material	Systems components: <ul style="list-style-type: none">+ Aluminium fastening elements+ Stainless steel screws+ EPDM sealing rubber
Planning aid	Configuration and structural analysis via Schletter Configurator.
Structural analysis	Structural analysis according to the current specific national standards (Australia AS/NZS 1170.2-2011). It also complies with DIN EN 1991-1 based on Eurocodes and general construction approvals. Roofing and building certificates are not included. Any instructions on required certification and approval must be observed.
Required tools	TORX T40, M14 socket
Warranty	25 years according to our warranty terms.
Supplementary documents	Flush Mount Installation Manual

Article overview	
119026-122	Rapid Pro L 
Accessories (pre-assembled)	
<div><div><div>1. Clamping Part Rapid-Pro</div><div>2. BOLT HX TX LS M8X35, A2-70</div><div>3. Rapid Pro L sawn punched</div><div>4. Rubber hose for compression spring</div><div>5. EPDM rubber self-adhesive 30x3x55mm</div></div><div></div></div>	

Overall dimensions

