

RAPID FIX SOLAR UNDER PANEL AC ISOLATOR

PART NO.
900000-204

DIMENSIONS:
130mmL x 120mmW x 90mmD



IP66 AC Isolator suitable for three-phase and single-phase installations

FEATURES



Easy to fit on top of Schletter rail under panel



Includes label for side of solar panel

**AC ISOLATOR
UNDER PANEL**



Includes Enphase trunk & earth gland for Enphase three phase & single phase trunk



Plus 25mm glueless conduit gland for entry to the roof



RAPID FIX SOLAR PV JOINER

PART NO.
900000-206

DIMENSIONS:
150mmL x 160mmW x 50mmD



FEATURES



Easy fit to top of Schletter rail under panel



Includes 25mm glueless corrugated conduit gland for entry to roof



Includes gland for three phase & single phase Enphase trunk & earth cable



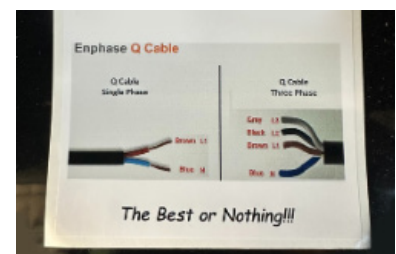
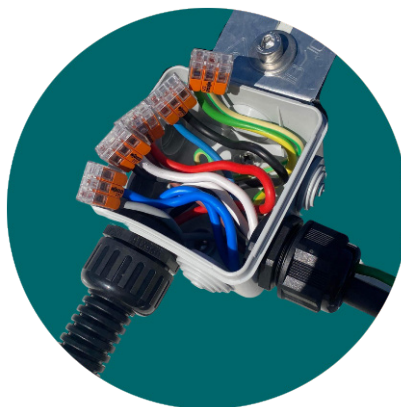
Includes 5x Wago connectors to suit a max 4mm cable size - up to 3 conductors



To be used when up to 3 cables require joining



Includes quick guide reminder to ensure you install correct cable colours & conductor orientation



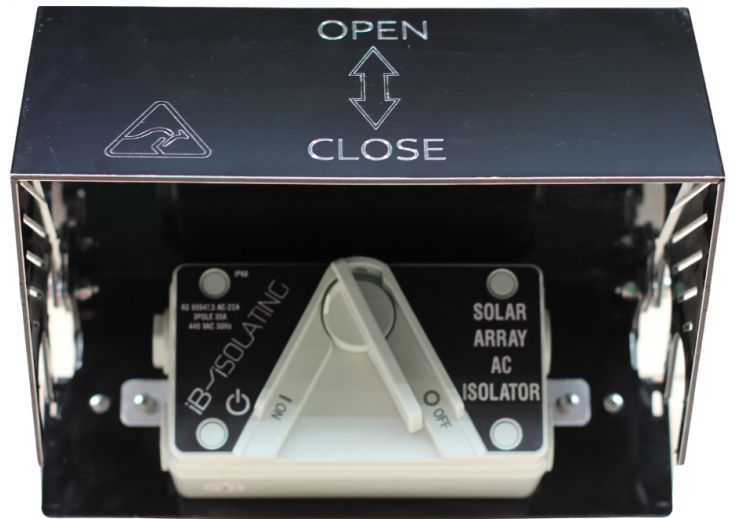
IP 54 rated must be installed under solar module

RAPID FIX SOLAR PV AC ISOLATOR AND SHADE

NEW ZEALAND ONLY

PART NO.
900000-203

DIMENSIONS:
270mmL x 165mmW x 115mmD



FEATURES



Pre-assembled fitted directly to the rail



3 phase 35 Amp AC isolator as standard



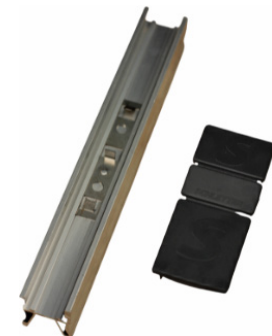
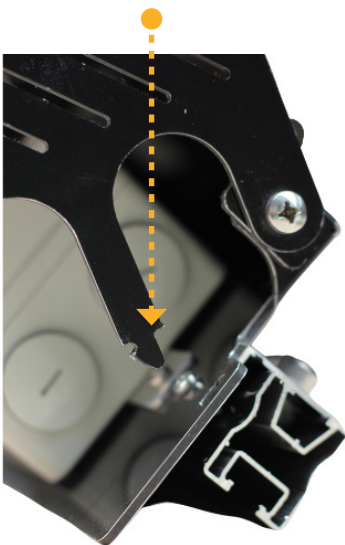
Lock in cam to hold cover closed



Rapid installation isolator cover made from black alucobond



Comes with separate splice and end cap to fit on either the right or left of rail



RAPID FIX SOLAR PV DC ISOLATOR AND SHADE

PART NO.
900000-202

DIMENSIONS:
270mmL x 165mmW x 115mmD



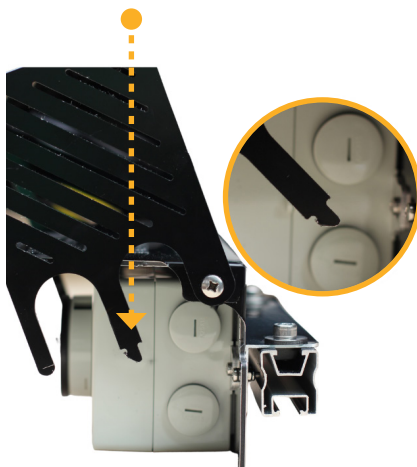
FEATURES



Pre-assembled fitted directly to the rail



Lock in cam to hold cover closed



Rapid installation isolator cover made from black alucobond



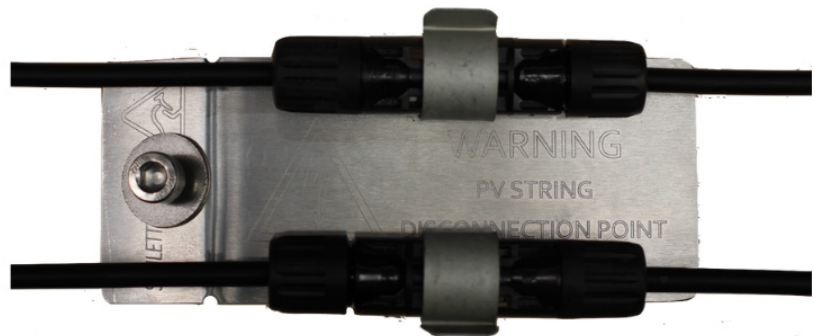
Comes with separate splice and end cap to fit on either the right or left of rail



RAPID FIX SOLAR PV DC DISCONNECTION POINT

PART NO.
900000-205

DIMENSIONS:
110mmL x 60mmW



FEATURES



Easy fit to top of Schletter rail under panel



Perfectly sized slotted MC4 cradles to hold connectors firmly in place. Yet easy to remove in isolation event.

